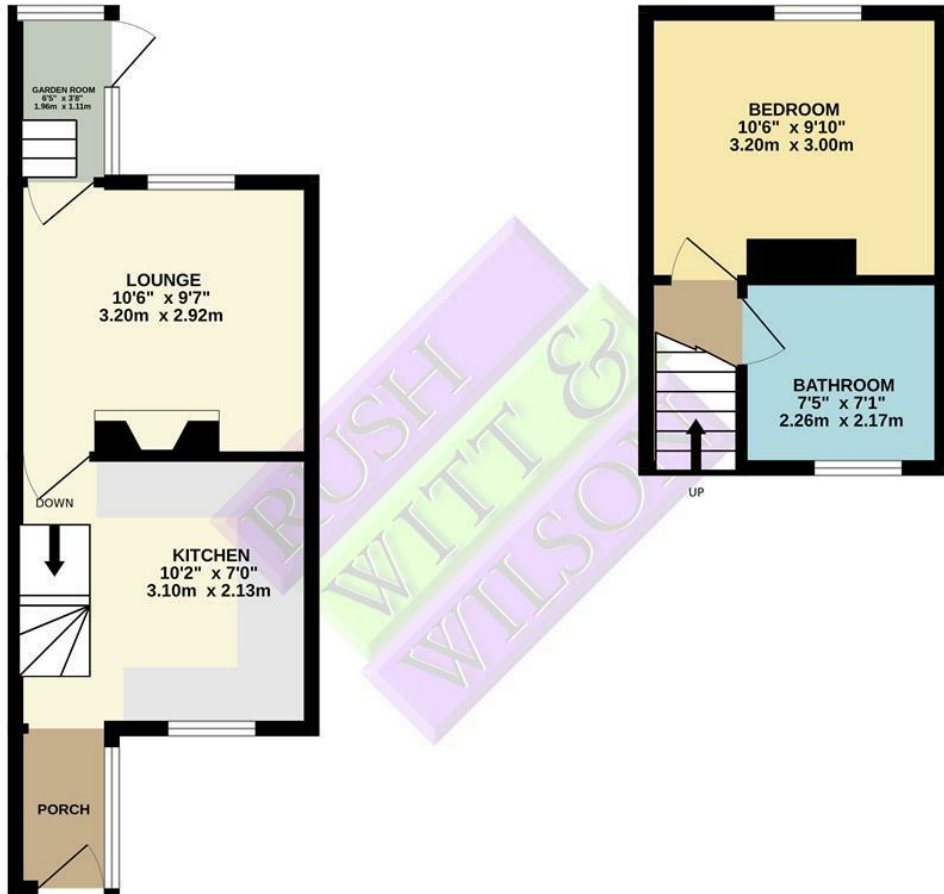




**92 Rye Road,
Hastings, East Sussex TN35 5DG
£165,000**

This well presented one bedroom semi detached house is a rare opportunity to purchase a freehold house within this price range. Internally the entrance hall leads off directly to a modern fitted kitchen with gas hob, oven and extractor as well as space for appliances, modern fitted boiler and separate utility cupboard. The rear reception room enjoys views onto the garden and a fireplace recess as well access to a useful rear porch. To the first floor a double bedroom and a spacious bathroom/wc. The property enjoys a great size garden and is just yards away from amenities in Ore Village with its range of shops and Aldi supermarket. The location also offers excellent road links and bus routes. Offered with double glazing and gas central heating, early viewings are encouraged for this unique property that will naturally have a wide appeal for a range of buyers.





Whilst every attempt has been made to ensure the accuracy of the floorplan contained here, measurements of doors, windows, rooms and any other items are approximate and no responsibility is taken for any error, omission or mis-statement. This plan is for illustrative purposes only and should be used as such by any prospective purchaser. The services, systems and appliances shown have not been tested and no guarantee as to their operability or efficiency can be given.
Made with Metropix 62023

Energy Efficiency Rating		Current	Potential
Very energy efficient - lower running costs			
(92 plus) A			90
(81-91) B			
(69-80) C			
(55-68) D		64	
(39-54) E			
(21-38) F			
(1-20) G			
Not energy efficient - higher running costs			
England & Wales		EU Directive 2002/91/EC	

Environmental Impact (CO ₂) Rating		Current	Potential
Very environmentally friendly - lower CO ₂ emissions			
(81-91) A			
(69-80) B			
(55-68) C			
(39-54) D			
(21-38) E			
(1-20) F			
(1-20) G			
Not environmentally friendly - higher CO ₂ emissions			
England & Wales		EU Directive 2002/91/EC	



**RUSH
WITT &
WILSON**



Rother House Havelock Road
Hastings
East Sussex
TN34 1BP
Tel: 01424 442443
hastings@rushwittwilson.co.uk
www.rushwittwilson.co.uk